



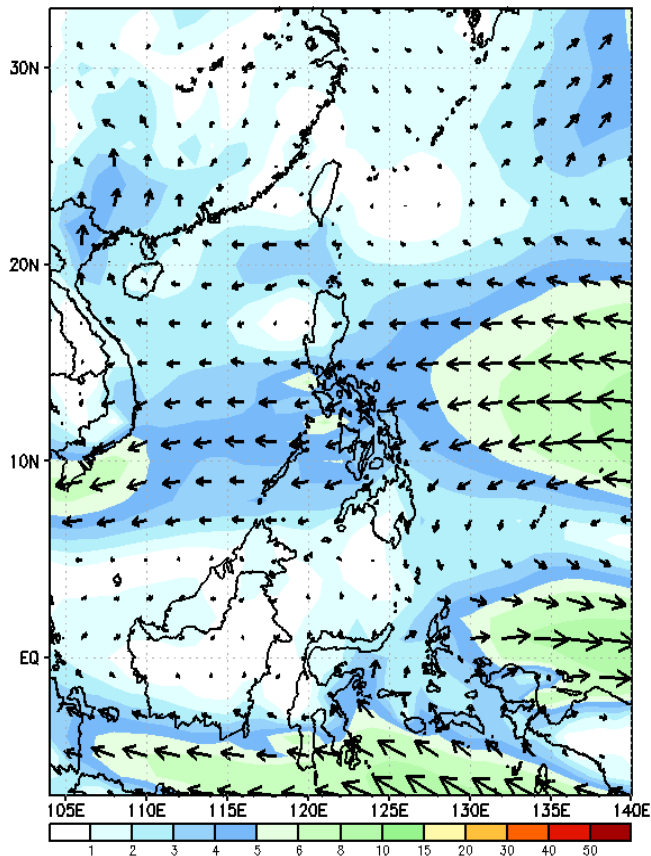
# Week 1 & Week 2 Forecast for the Philippines using GEFS Model



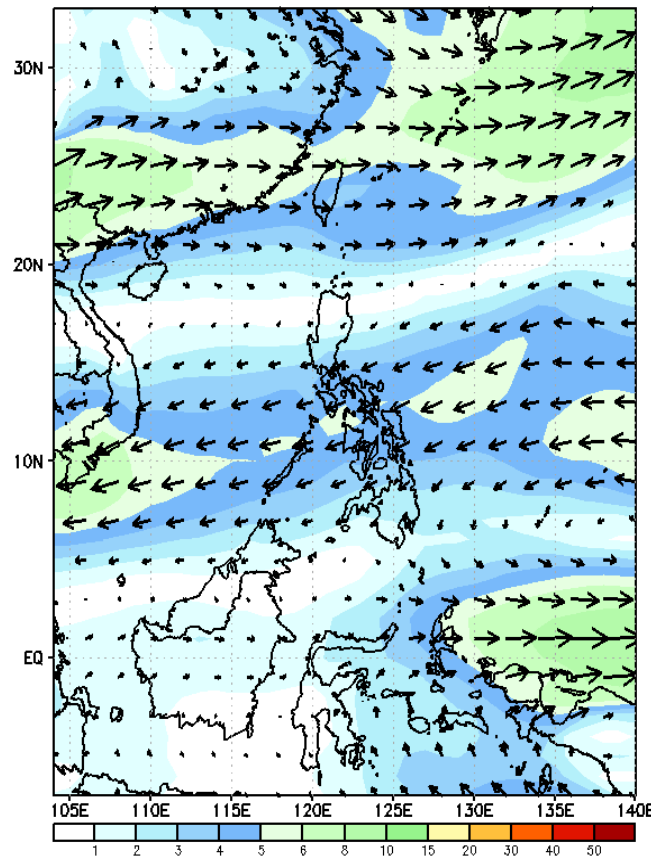
# GEFS Week-1 Wind Forecasts:

Week 1: May 08-14, 2024

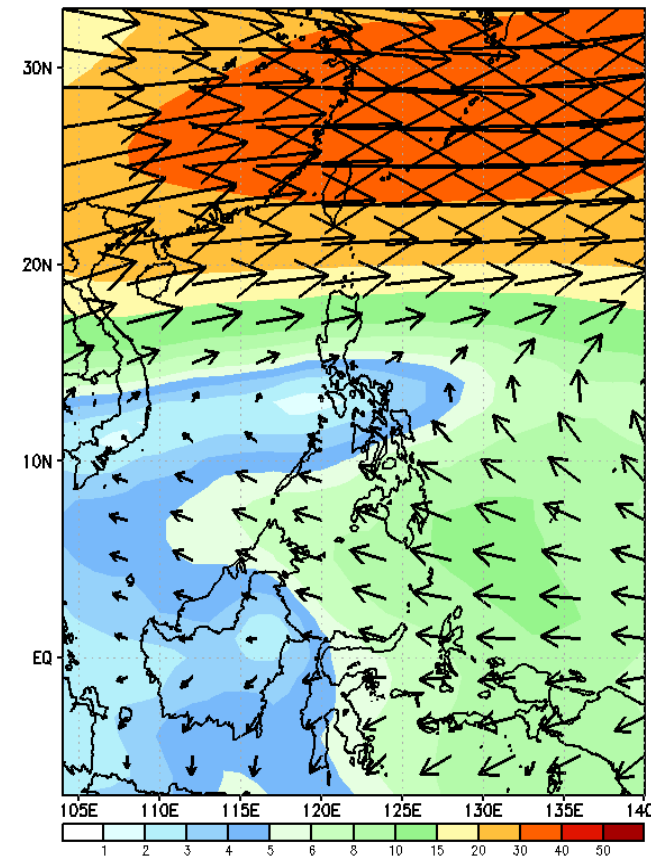
GEFS Week-1 850-hPa Wind Total  
Valid: 20240508 - 20240514



GEFS Week-1 700-hPa Wind Total  
Valid: 20240508 - 20240514

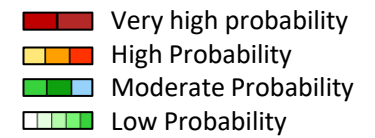


GEFS Week-1 200-hPa Wind Total  
Valid: 20240508 - 20240514



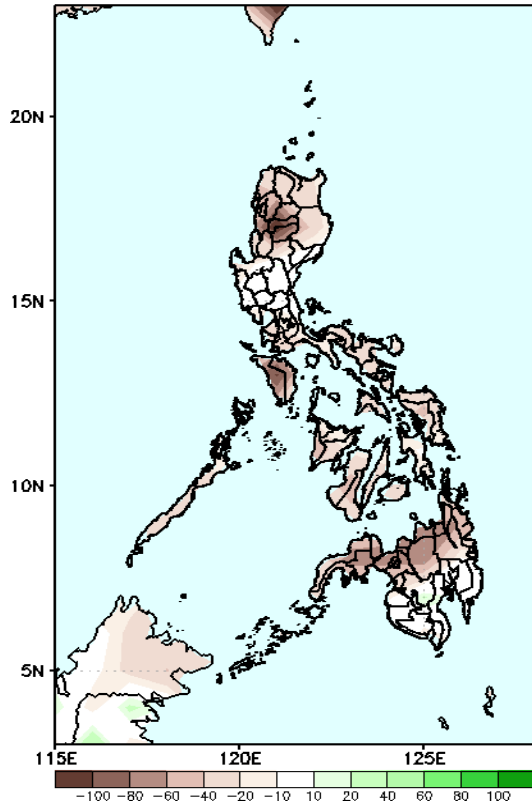
Easterlies continuously affect most parts of the country. Expect dry and warm days during the forecast period.

# Precipitation Anomaly and Exceedance Probability > 25/50 mm



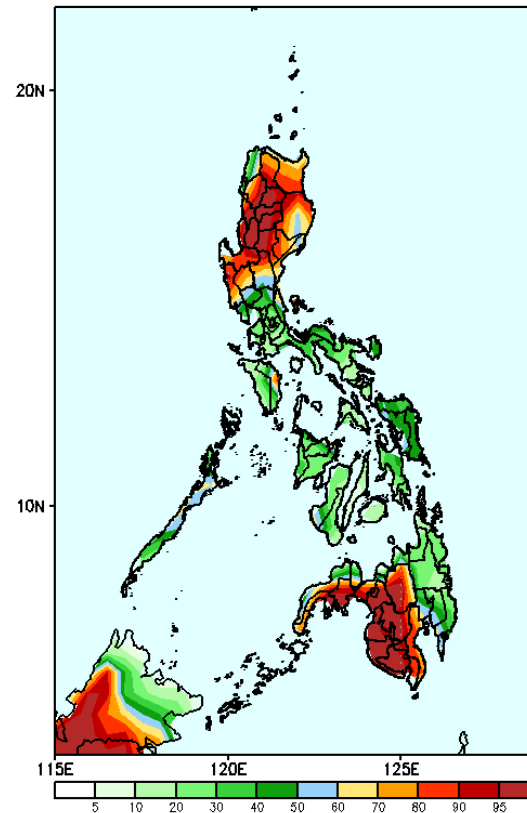
Week 1: May 08-14, 2024

GEFS Week-1 Precip Anomaly  
Valid: 20240508 - 20240514



Rainfall deficit of 40-100mm is expected in CAR;  
20-80mm for the rest of the country

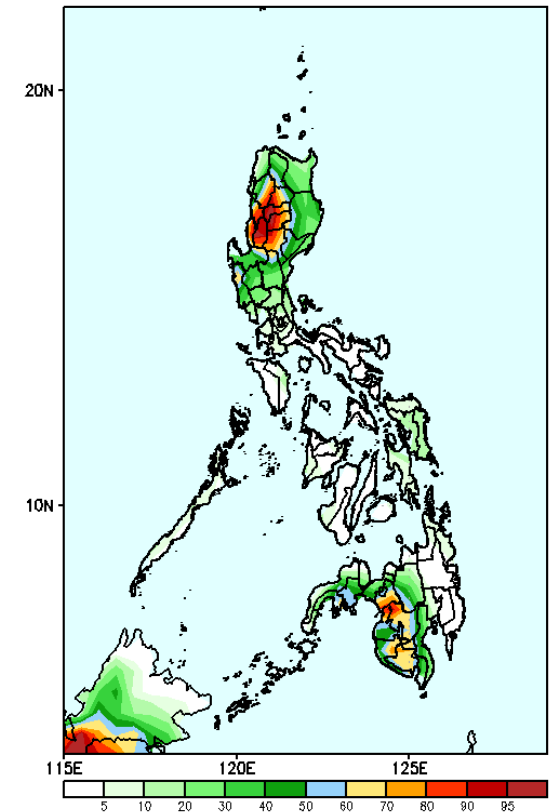
GEFS Week-1 Exceedance Prob. > 25mm  
Valid: 20240508 - 20240514



## Probability to Exceed 25mm

- High to very high over CAR, and south and Western Mindanao;
- Moderate to high over the rest of northern Luzon, Central Luzon, Samar Provinces, Northern Palawan, and a portion of Oriental Mindoro;
- Low to moderate over the rest of the country.

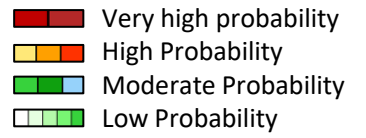
GEFS Week-1 Exceedance Prob. > 50mm  
Valid: 20240508 - 20240514



## Probability to Exceed 50mm

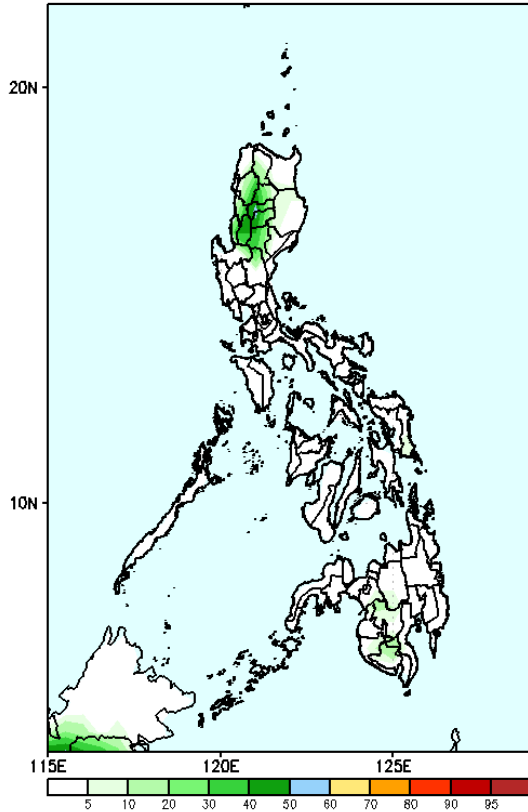
- Moderate to high over most of CAR, Nueva Vizcaya, La Union, Zambales and Western Mindanao;
- Low to moderate over the rest of country.

# Exceedance Probability > 100/150/200 mm



Week 1: May 08-14, 2024

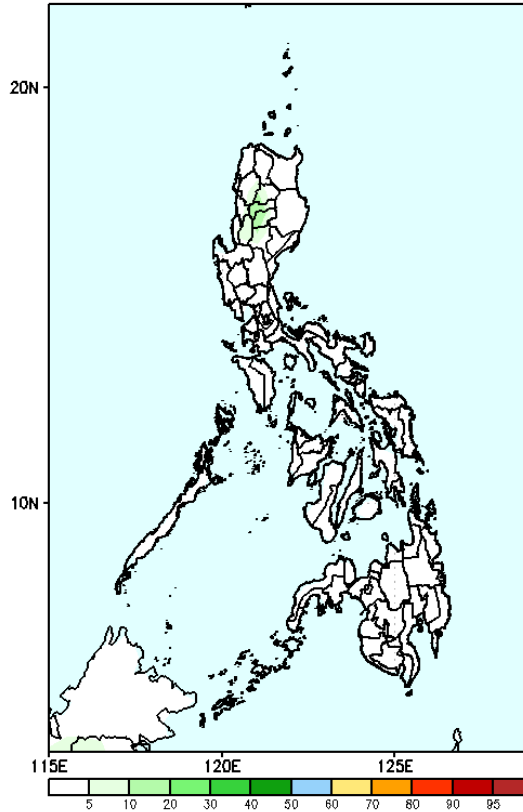
GEFS Week-1 Exceedance Prob. > 100mm  
Valid: 20240508 - 20240514



Probability to Exceed 100mm

- Low across the country.

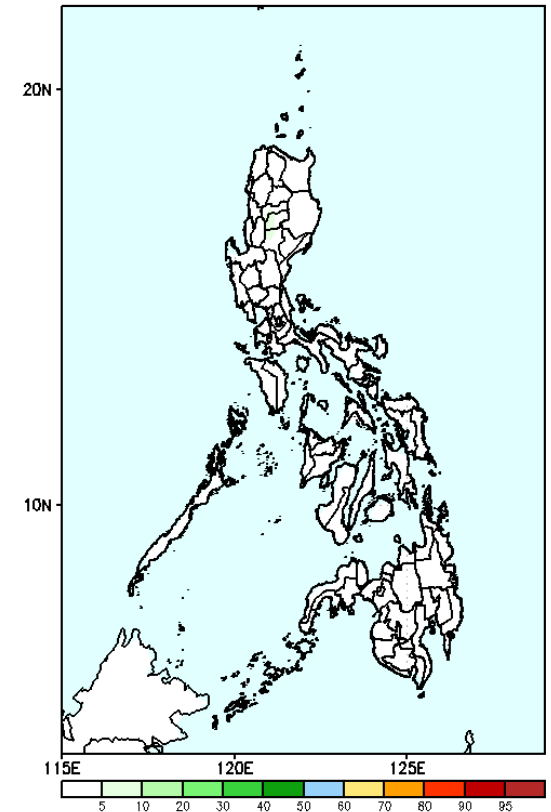
GEFS Week-1 Exceedance Prob. > 150mm  
Valid: 20240508 - 20240514



Probability to Exceed 150mm

- Low across the country.

GEFS Week-1 Exceedance Prob. > 200mm  
Valid: 20240508 - 20240514



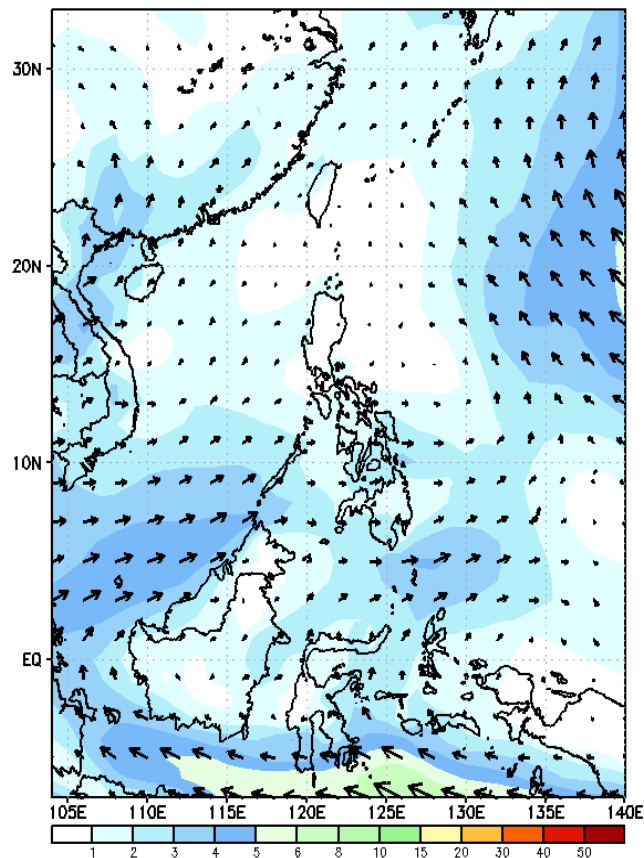
Probability to Exceed 200mm

- Low across the country.

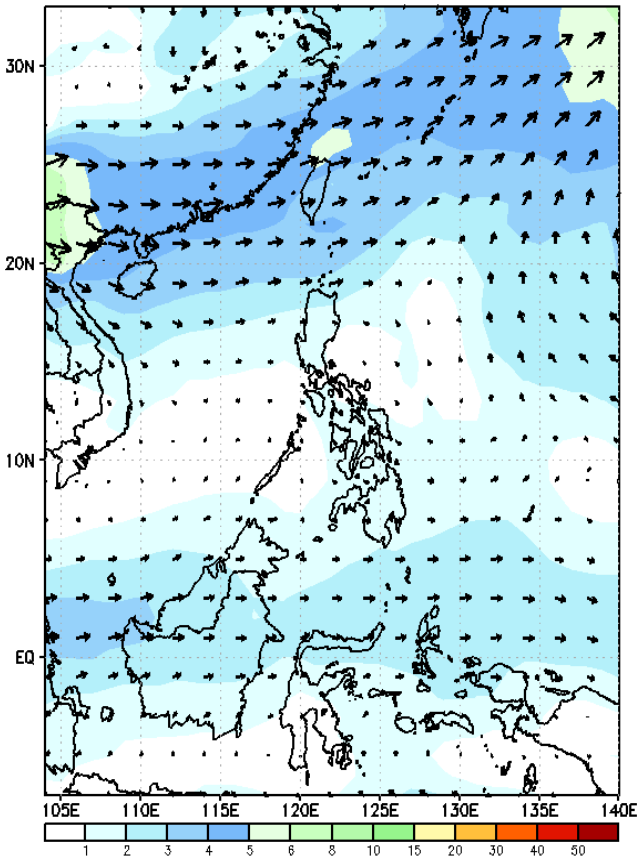
# GEFS Week-2 Wind Forecasts:

Week 2: May 15-21, 2024

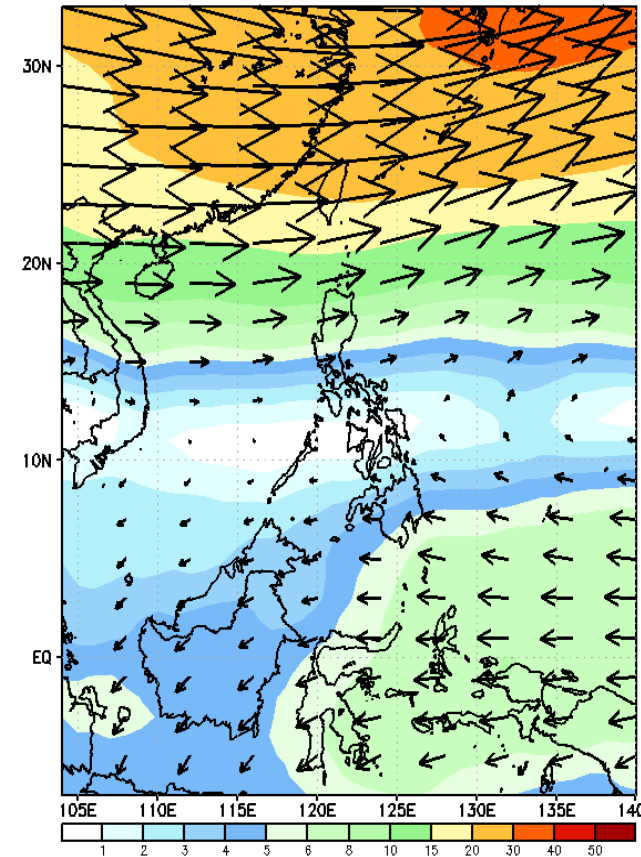
GEFS Week-2 850-hPa Wind Total  
Valid: 20240515 - 20240521



GEFS Week-2 700-hPa Wind Total  
Valid: 20240515 - 20240521



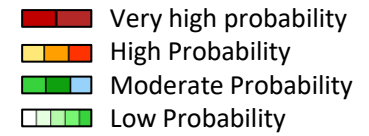
GEFS Week-2 200-hPa Wind Total  
Valid: 20240515 - 20240521



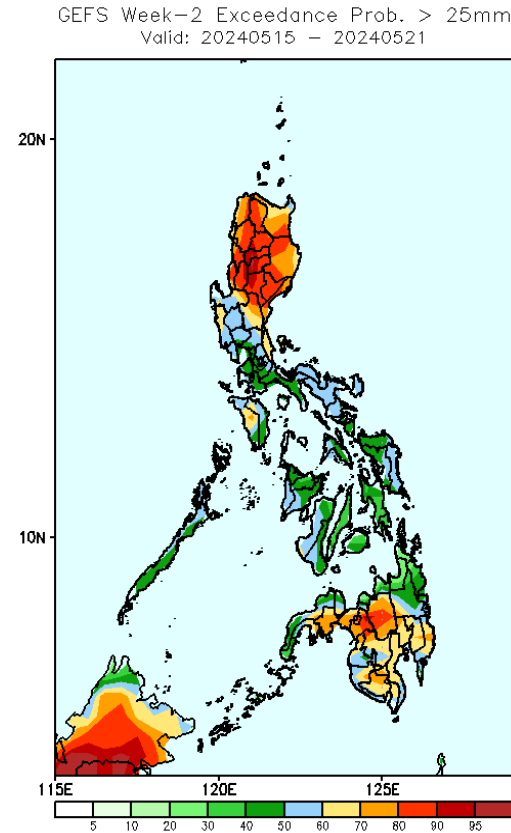
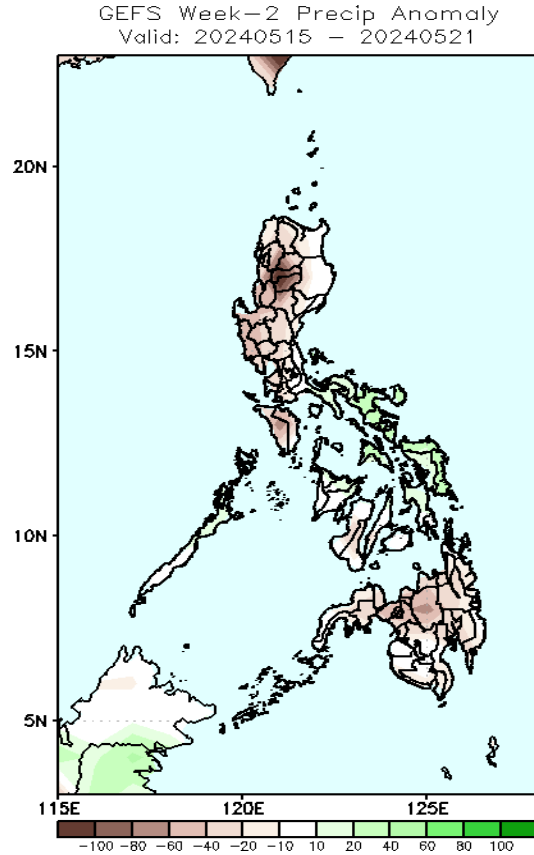
Southwest windflow will likely affect some areas in Palawan and western Mindanao. Easterlies will likely prevail in most parts of the country. Expect dry and warm days during the forecast period.



# Precipitation Anomaly and Exceedance Probability > 25/50 mm

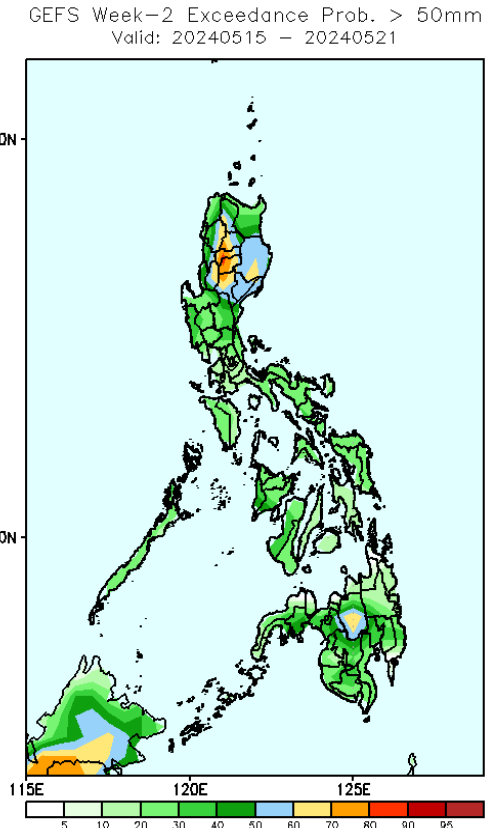


Week 2: May 15-21, 2024



## Probability to Exceed 25mm

- High to very high over CAR and Cagayan Valley;
- Moderate to high over the rest of the country.

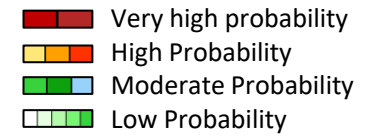


## Probability to Exceed 50mm

- Moderate to high over most of northern Luzon and Bukidnon;
- Low to moderate over the rest of the country.

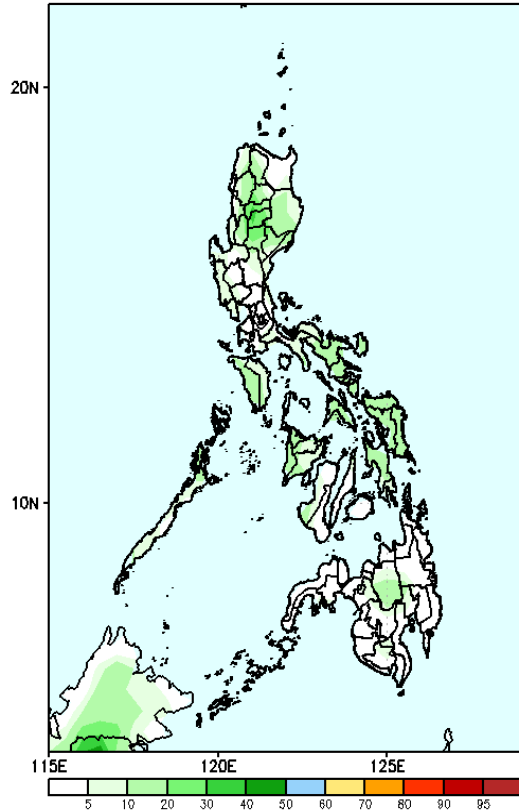
Rainfall deficit of 20-80mm is expected in most parts of the country except in Bicol region and Eastern Visayas where 20 – 60mm increase in rainfall is likely.

# Exceedance Probability > 100/150/200 mm



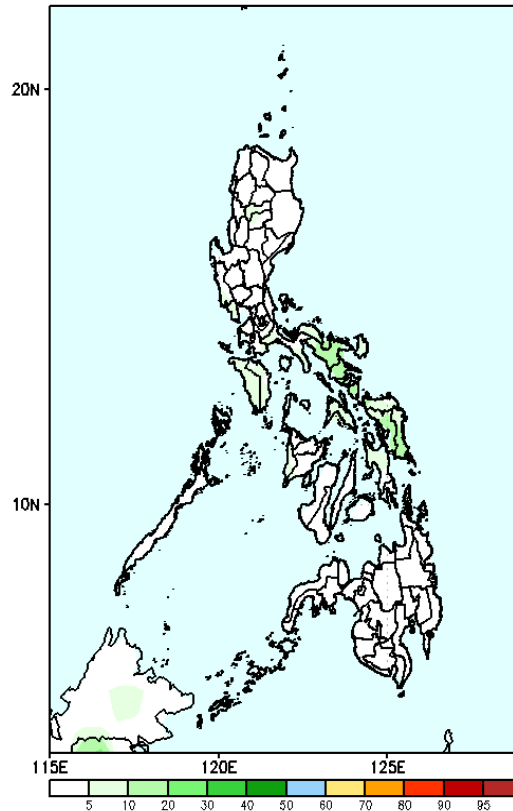
Week 2: May 15-21, 2024

GEFS Week-2 Exceedance Prob. > 100mm  
Valid: 20240515 - 20240521



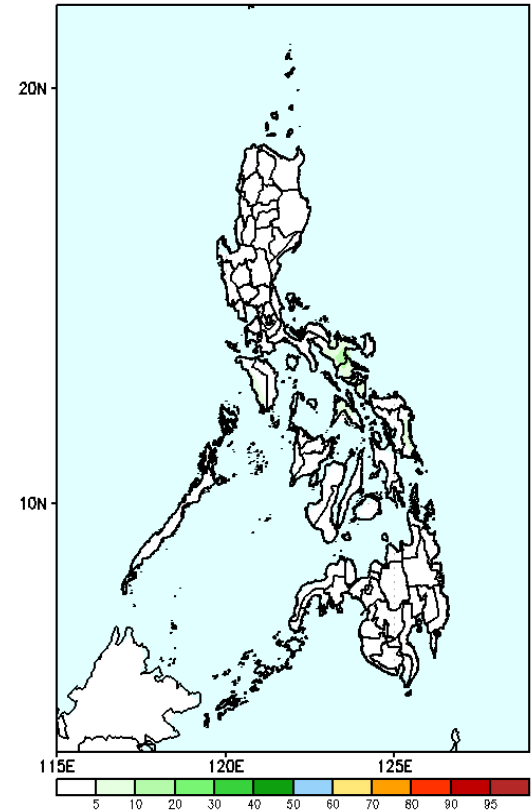
**Probability to Exceed 100mm**  
• Low across the country.

GEFS Week-2 Exceedance Prob. > 150mm  
Valid: 20240515 - 20240521



**Probability to Exceed 150mm**  
• Low across the country.

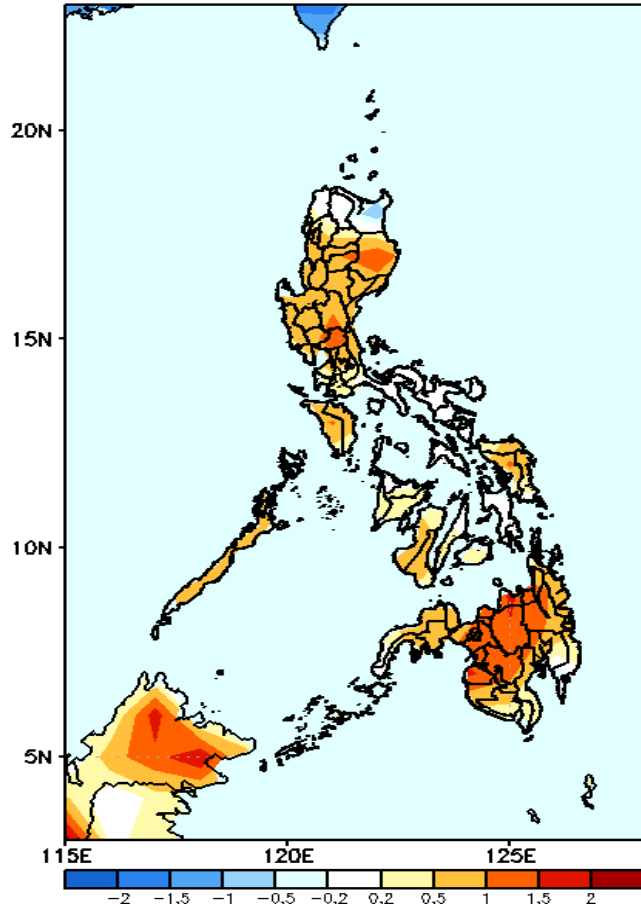
GEFS Week-2 Exceedance Prob. > 200mm  
Valid: 20240515 - 20240521



**Probability to Exceed 200mm**  
• Low across the country.

# GEFS Week-1 & 2 Forecasts: T2m Anomaly

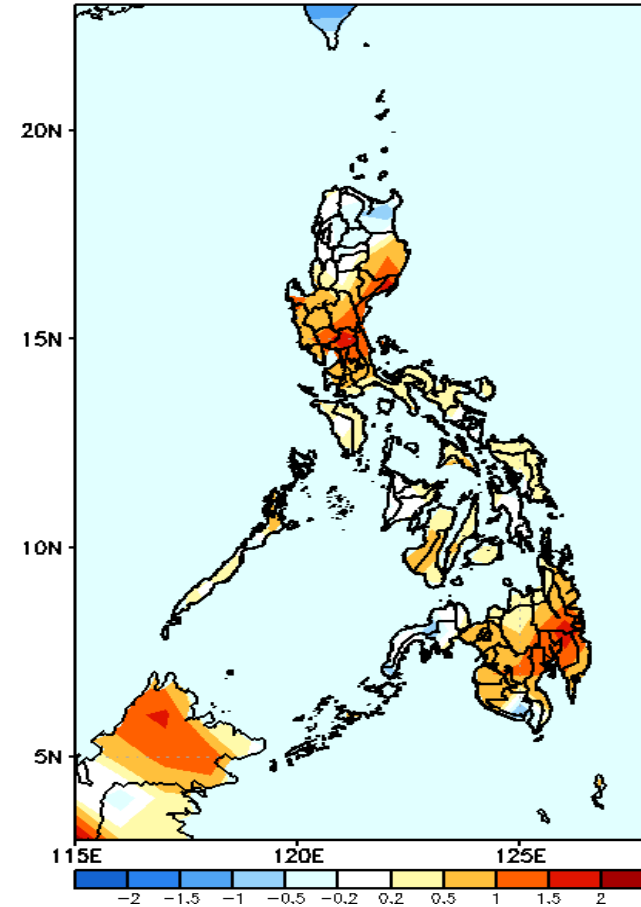
GEFS Week-1 T2m Anomaly  
Valid: 20240508 - 20240514



## 2m Temperature Week 1: May 08-14, 2024

Slightly warmer to warmer than average surface air temperature will likely be experienced in most parts of the country.

GEFS Week-2 T2m Anomaly  
Valid: 20240515 - 20240521



## 2m Temperature Week 2: May 15-21, 2024

Slightly warmer to warmer than average surface air temperature will likely be experienced in most parts of the country except in some areas of Northern Luzon and Zamboanga Peninsula where temperatures near to slightly cooler than average surface air temperature is expected.